

## Great Horned Owl Age Chart

Photos and weights of 3 captive-reared broods at the International Owl Center, Houston, MN ([www.internationalowlcenter.org](http://www.internationalowlcenter.org))

*Bubo virginianus virginianus*

2013: 3 owlets, parent-reared, trained on live prey

2014: 2 owlets, hand-reared from 2 weeks of age to be education ambassadors

2017: 2 owlets, parent-reared, not trained on live prey

*Exact ages are given when known for birds less than 8 weeks old. Genders were determined by blood test.*

### **Very general notes, based on these broods with ideal food supply:**

Less than 1 week: eyes closed, egg tooth present (no weight data)

1-2 weeks: eyes open, not much feather development (

2-3 weeks: buffy down coming in

3-4 weeks: flight feathers starting to emerge from sheaths

4-5 weeks: facial disc develops, flight feathers growing

5-6 weeks: fully developed black facial disc margin, flight feathers substantially grown

6-8 weeks: fledging, wing feathers nearly fully grown but tails not quite done

3 months: adult breast feathers emerging

4 months: adult back feathers growing in

5 months: last of the adult head feathers growing in

6 months: fully feathered

### **UP TO ONE WEEK**



2-day-old female (2013)



6-day-old female, 3-day-old male (2017)



9-day-old female, 6-day-old male (2014)

## 1-2 WEEKS



12-day-old female (2017)



9-day-old male (2017)



14-day-old female, 12-day-old male, 8-day-old female (2013)



14-day-old male with mother (2017)





2-week-old owlet (2014)



2-week-old owlet (2014)

## 2-3 WEEKS



20-day-old female, 18-day-old male, 14-day-old female (2013)



19-day-old male and 21-day-old female (2014)



About 3-week-old owlet (2014)



### 3-4 WEEKS



25-day-old female, 23-day-old male, 19-day-old female (2013)



3.5 weeks (2013)





25-day-old male (2014)



3.5-week-old owlet (2014)

## 4-5 WEEKS



28-day-old female (2017)



32-day-old female (facing) 30-day-old male (tail view) 2013





36-day-old female, 34-day-old male, 30-day-old female (2013)



37-day-old female, 35-day-old male, 31-day-old female (2013)



## 5-6 WEEKS



37-day-old male (2014)



38-day-old male stretching (2017)



40-day-old male (facing) and 43-day-old female (back view) 2017



5-week-old owlet (2013)



## 6-7 WEEKS



44-day-old female, 42-day-old male, 38-day-old female (2013)



48-day-old female (2017)



## 7-8 WEEKS



7-week-old female and male (2014)



50-day-old female (2017)



57-day-old male (2014)

## 2-3 MONTHS



8.5-week-old female and male (2017)



9- to 9.5-week-old (two) females and a male (2013)





11-week-old male (killing live prey) 2013

### 3-4 MONTHS



12-week-old female and male (2017)



12-week-old male and female (2014)

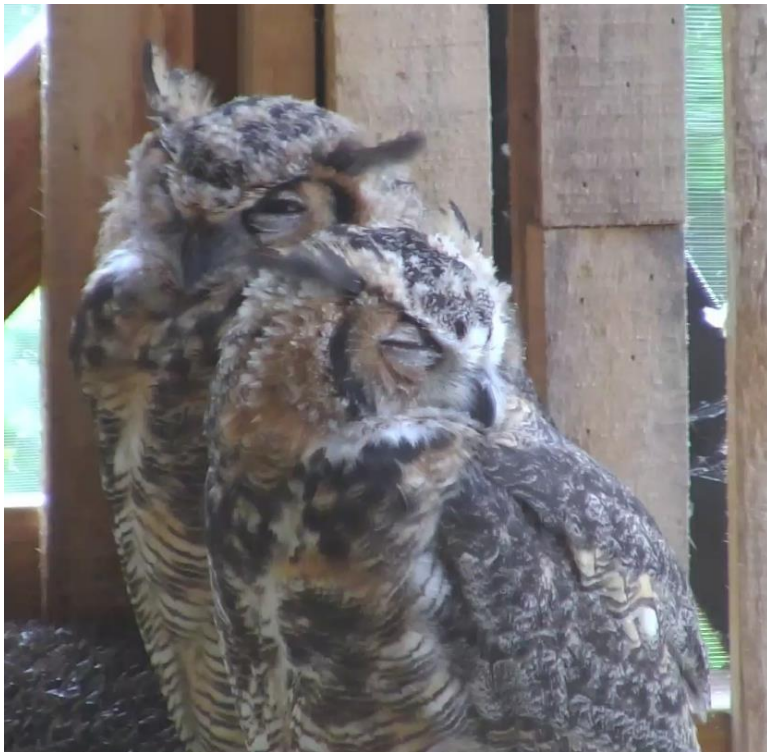


15-week-old female and male (2014)

## 4-5 MONTHS



18-week-old owlet (2013)



22-week-old female and male (2013)

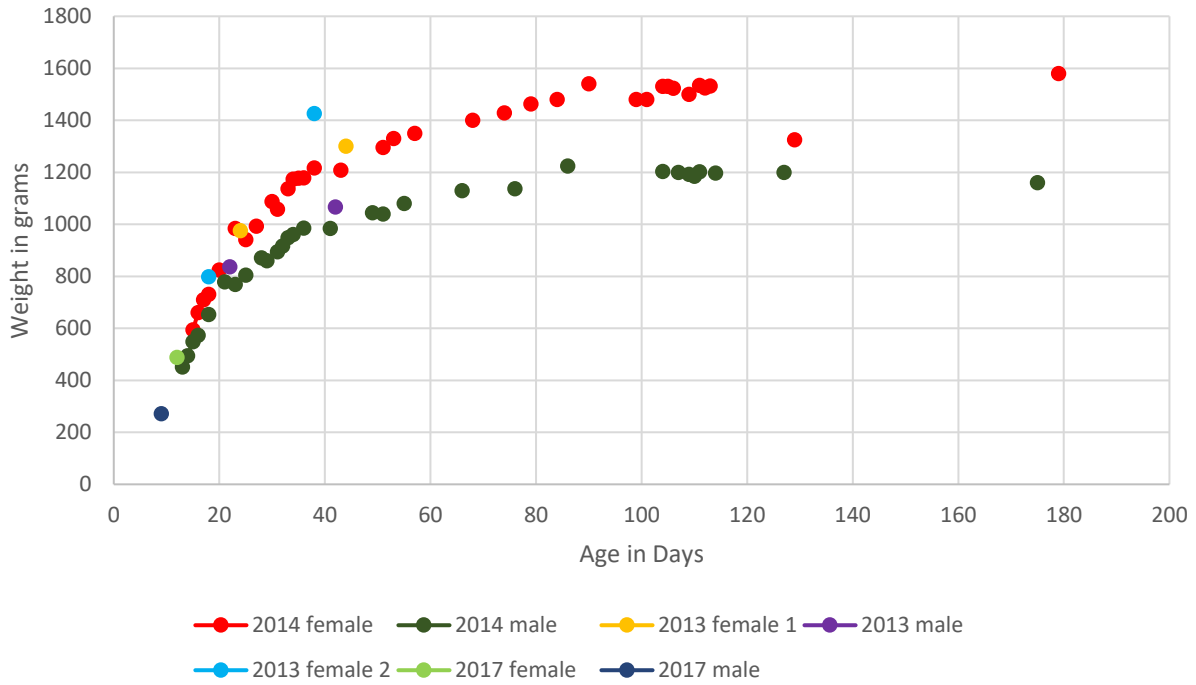


## 6 MONTHS



26-week-old female and male (2014)

### Captive-reared Great Horned Owl Weights at Known Ages



Great Horned Owlet Weights (g)							
Age in Days	2014 female	2014 male	2013 female 1	2013 male	2013 female 2	2017 female	2017 male
9							271
10							
11							
12						488	
13		451					
14		494					
15	594	548					
16	661	573					
17	710						
18	731	653			798		
19							
20	824						
21		779					
22				837			
23	984	769					
24			975				
25	941	804					
26							
27	993						
28		871					
29		860					
30	1088						
31	1058	894					
32		916					

33	1137	949					
34	1174	961					
35	1177						
36	1179	985					
37							
38	1217				1426		
39							
40							
41		984					
42				1066			
43	1208						
44			1300				
45							
46							
47							
48							
49		1045					
50							
51	1295	1040					
52							
53	1330						
54							
55		1080					
56							
57	1350						
58							
59							
60							
61							
62							
63							
64							
65							
66		1129					
67							
68	1400						
69							
70							
71							
72							
73							
74	1428						
75							
76		1137					
77							
78							
79	1463						
80							
81							

82							
83							
84	1480						
85							
86		1224					
87							
88							
89							
90	1540						
91							
92							
93							
94							
95							
96							
97							
98							
99	1480						
100							
101	1480						
102							
103							
104	1530	1203					
105	1530						
106	1523						
107		1200					
108							
109	1500	1192					
110		1185					
111	1534	1202					
112	1525						
113	1532						
114		1197					
115							
116							
117							
118							
119							
120							
121							
122							
123							
124							
125							
126							
127		1200					
128							
129	1325						
130							



131							
132							
133							
134							
135							
136							
137							
138							
139							
140							
141							
142							
143							
144							
145							
146							
147							
148							
149							
150							
151							
152							
153							
154							
155							
156							
157							
158							
159							
160							
161							
162							
163							
164							
165							
166							
167							
168							
169							
170							
171							
172							
173							
174							
175		1160					
176							
177							
178							
179	1580						

Notes about owlet weights:

-The 2014 owlets were trained using food beginning between 40-50 days, which resulted in slightly decreased weights.

-2013 & 2014 owlets were fed a diet primarily consisting of pocket gophers (*Geomys bursarius*)

-2017 owlets were fed a diet primarily consisting of rats

-2013 owlets were trained on live rats, but they were not weighed after that time

-owlets were primarily housed in a 10x60' flight pen in 2013 and 2017 and a 10x35' flight pen in 2014

*For comments or suggestions, please contact:*

Karla Bloem

International Owl Center

PO Box 536

Houston, MN 55943

507-896-6957

[karla@internationalowlcenter.org](mailto:karla@internationalowlcenter.org)

Revised 19 June 2018